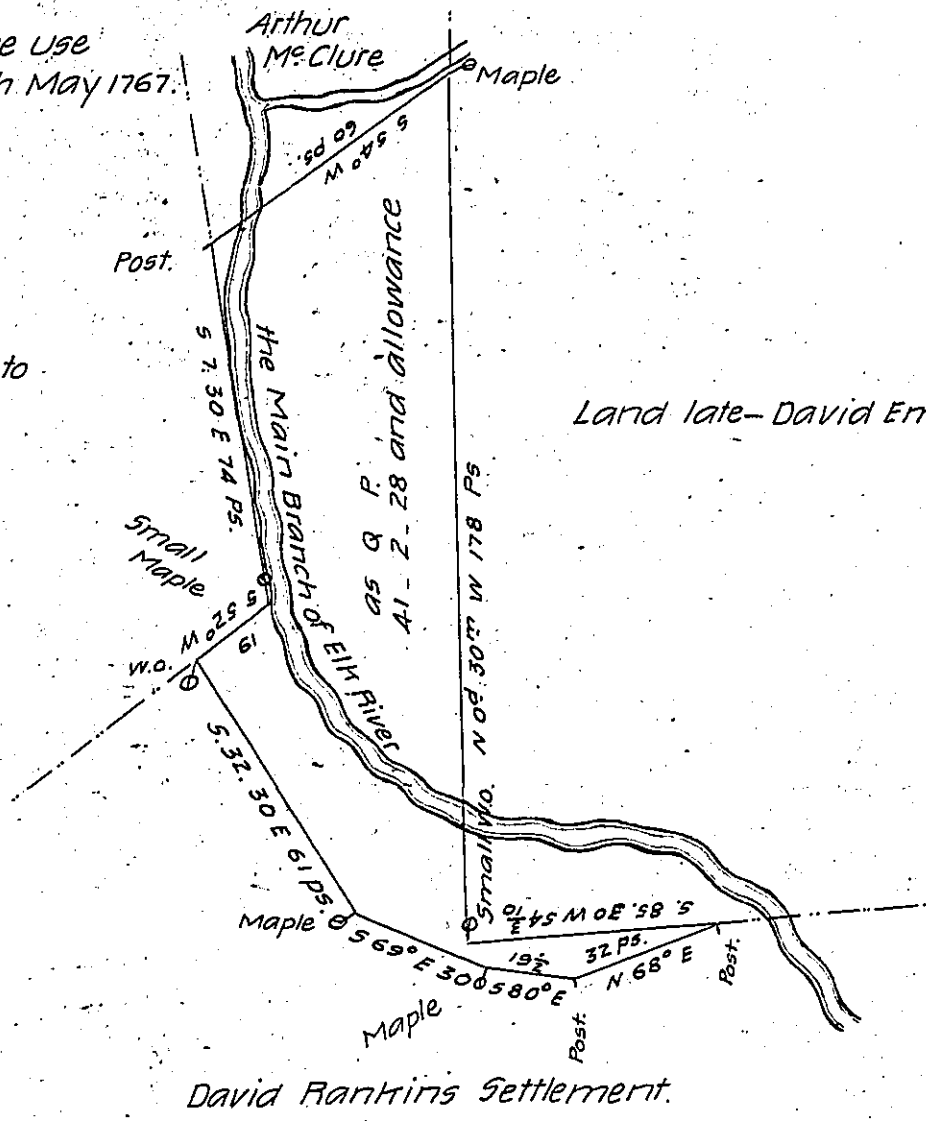


Warrant to accept Survey for the Use of John Mease dated the 4th May 1767.

Land Surveyed to Jas. Smith

Land late - David Emmet.



The above Draught describes a certain Tract of Land situate part in the Township of East Nottingham and part in the Township of New London in the County of Chester containing 41 a. 2 q. 28 p. and the allowance of six acres P. Cent for Roads &c. Surveyed for the use of the Honourable the Proprietaries of the Province of Pennsylvania by order of John Lukens Surveyor General. Surveyed the 27th day of October 1763.

P. T. Woodward

IN TESTIMONY that the above is a copy of the original remaining on file in the Department of Internal Affairs of Pennsylvania, made conformably to an Act of Assembly approved the 16th day of February, 1833, I have hereunto set my Hand and caused the Seal of said Department to be affixed at Harrisburg, this eleventh day of December 1905.

*James R. Brown*  
Secretary of Internal Affairs.